

Alaska Department of Fish and Game

Habitat Section
Southeast Region



114-31-10130-2022-3003-4007-5300

ADDITION

Water body name:

Survey date: 9/9/2021; 6/28/2022

Quad: Sitka D-5

Species & Lifestage: CO

Upper Reach Latitude: 57.945967 **Longitude:** -135.395477

Survey crew: RR, FC, BL, MR

Lower Reach Latitude: 57.946619 **Longitude:** -135.399019

Findings: We surveyed this cataloged stream using a backpack electrofisher, baited minnow traps, and GPS. We captured juvenile coho salmon, cutthroat trout, and sculpin. The stream has a headcut of fine organic material where it drops out of grassy muskeg and into a gravel channel, creating a temporary barrier to fish passage (Table 1; Figures 1–3).

Recommendations: Extend upper extent of Stream No. 114-31-10130-2022-3003-4007-5300 in the anadromous waters catalog (Figure 4).

Nomination: Pending

Table 1.—114-31-10130-2022-3003-4007-5300 survey data.

Waypoint	Latitude	Longitude	Notes	Stream Width ft	Stream Substrate	Habitat Features	Gradient %	Sample Effort	Sample Results
867	57.946373	-135.396739	Start of survey, upstream of culvert.	8-10	Small Gravel Large Gravel	SWD Spawning Substrate	2-4	EF	1 CT
868	57.946162	-135.395906						EF	1 CO 5 CT 4 SC 2 CO
869	57.945888	-135.395494	Small tributary on river-left, 10' upstream turns into a 8' tall falls.	2-4	Fine Organic Small Gravel	SWD	4-6	EF	2 CO
870	57.946328	-135.395104	Tributary off of main channel on river-left, ending quickly by seeping into the ground.	1-2	Fine Organic		2-4	EF	No Fish
871	57.946204	-135.394884	At confluence with tributary, water is slow and stagnant, there are many temporary barriers downstream. No fish since last CO capture.					EF	No Fish
872	57.946020	-135.395184	Stream enters a muskeg/grassy area. A lot of erosion/headcut present creating a temporary barrier. 5' falls and then goes subsurface. End of survey on stream.	1-2	Fine Organic	Incised Channel	1-2	EF	No Fish
2382	57.946235	-135.397423	Minnow trap set upstream of culvert. 7' squash CMP.	8-10	Large Gravel Small Gravel	Cut Banks	1-2	MT	2 CO 3 CT



Figure 1.—Juvenile coho salmon captured at waypoint 869.



Figure 2.—Channel at waypoint 868.



Figure 3.—Culvert inlet at waypoint 2382.

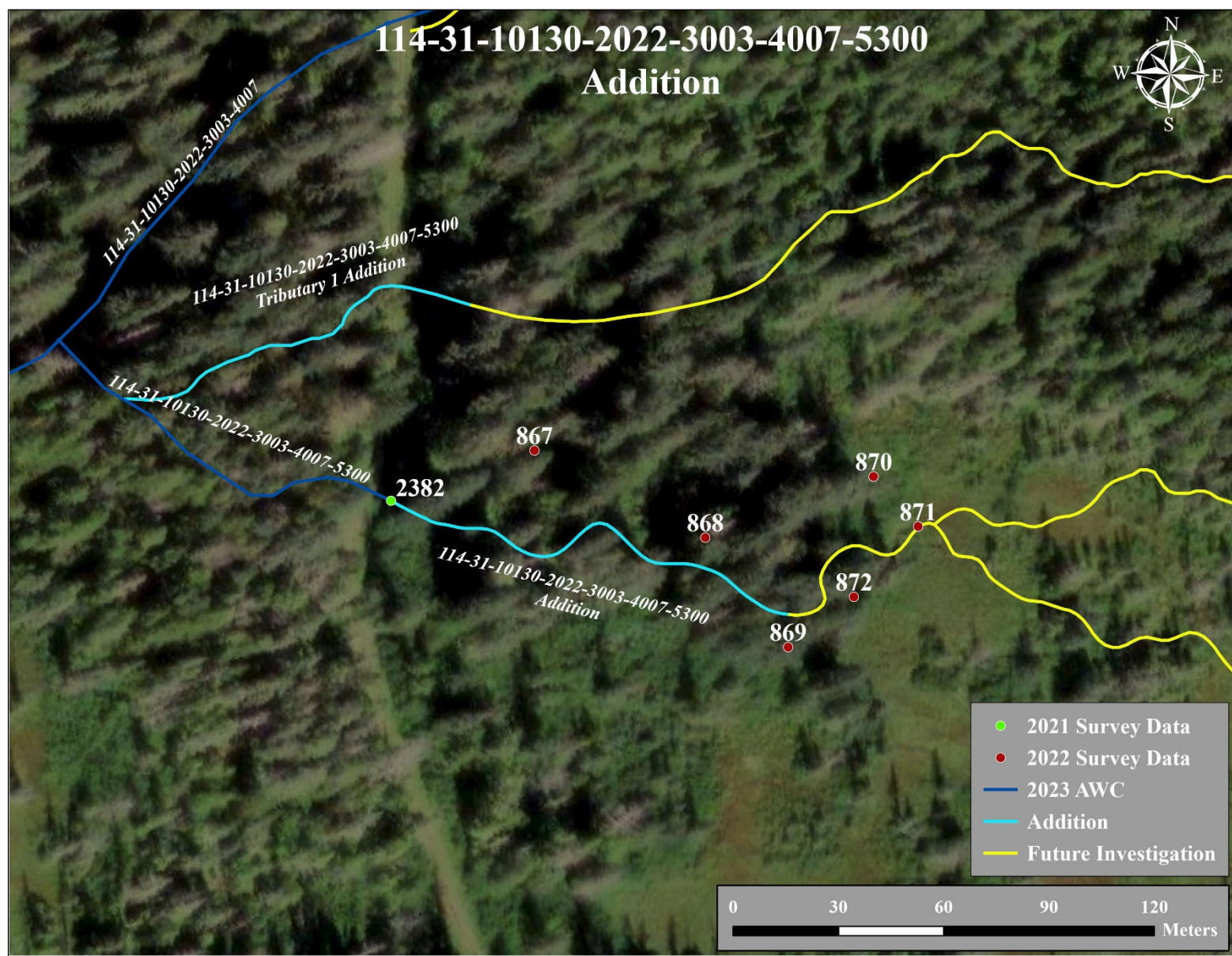


Figure 4.—Stream No. 114-31-10130-2022-3003-4007-5300 addition map.